

The Rooftight Story



For 30 years, our team of home builders has been focused on one thing: building homes for the way you live. We understand that a home is where your life unfolds, which is why we work closely with each client to design and construct spaces that reflect their unique needs and lifestyles.

Our team is dedicated to providing personalized service and creating a positive, seamless experience every step of the way. From the initial design to the final touches, we are committed to delivering exceptional results. But what truly sets us apart isn't just our experience—it's the people behind the work.

Today, we are part of The Shaw Group, a company with a 160+ year legacy in Atlantic Canada. We're proud to carry forward a tradition of excellence and dedication that has been trusted for generations.

The Harper





3198
SQ. FT.

5
BEDS

3.5
BATHS



 info@rooftight.ca
 rooftight.ca



The Harper

3198

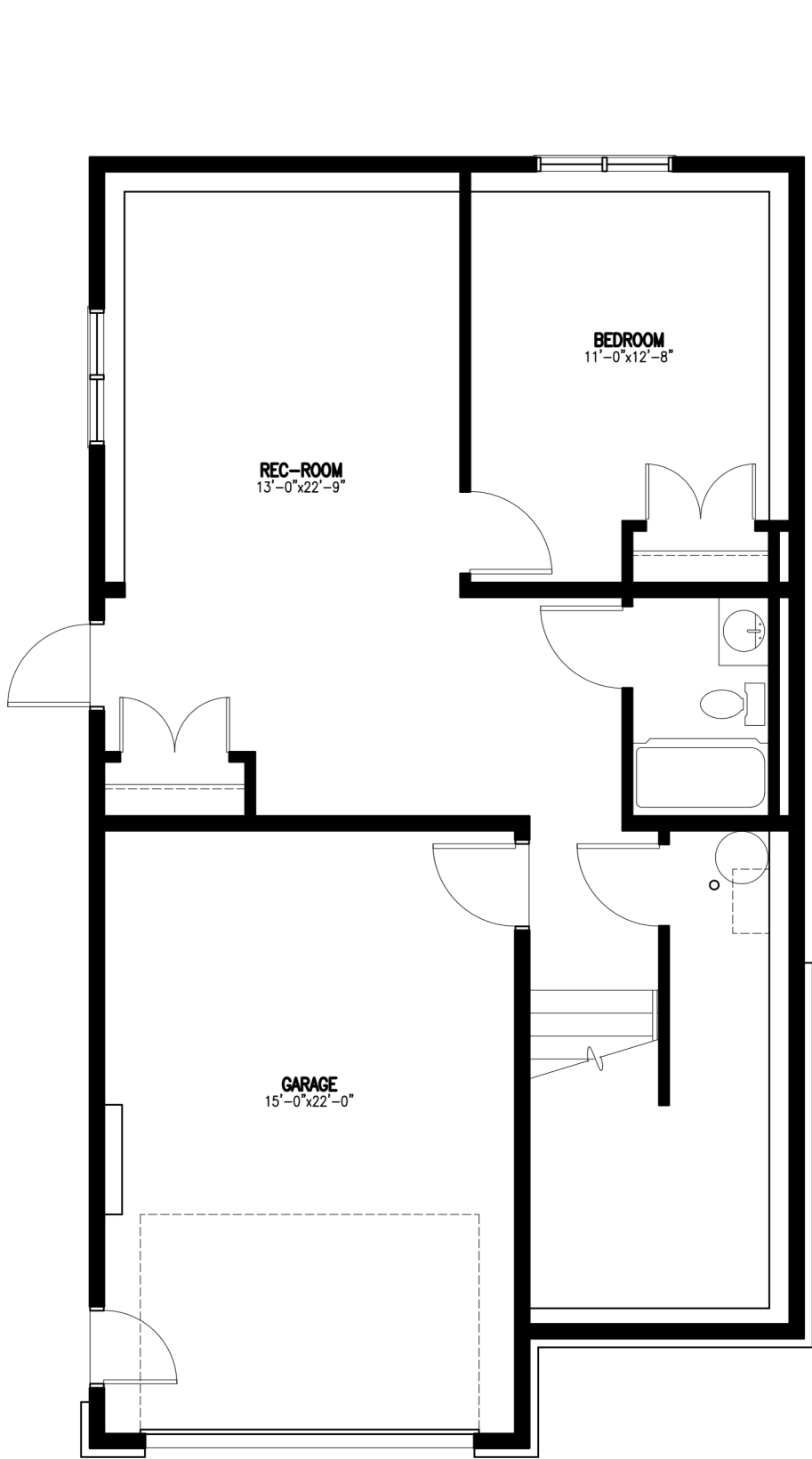
SQ. FT.

5

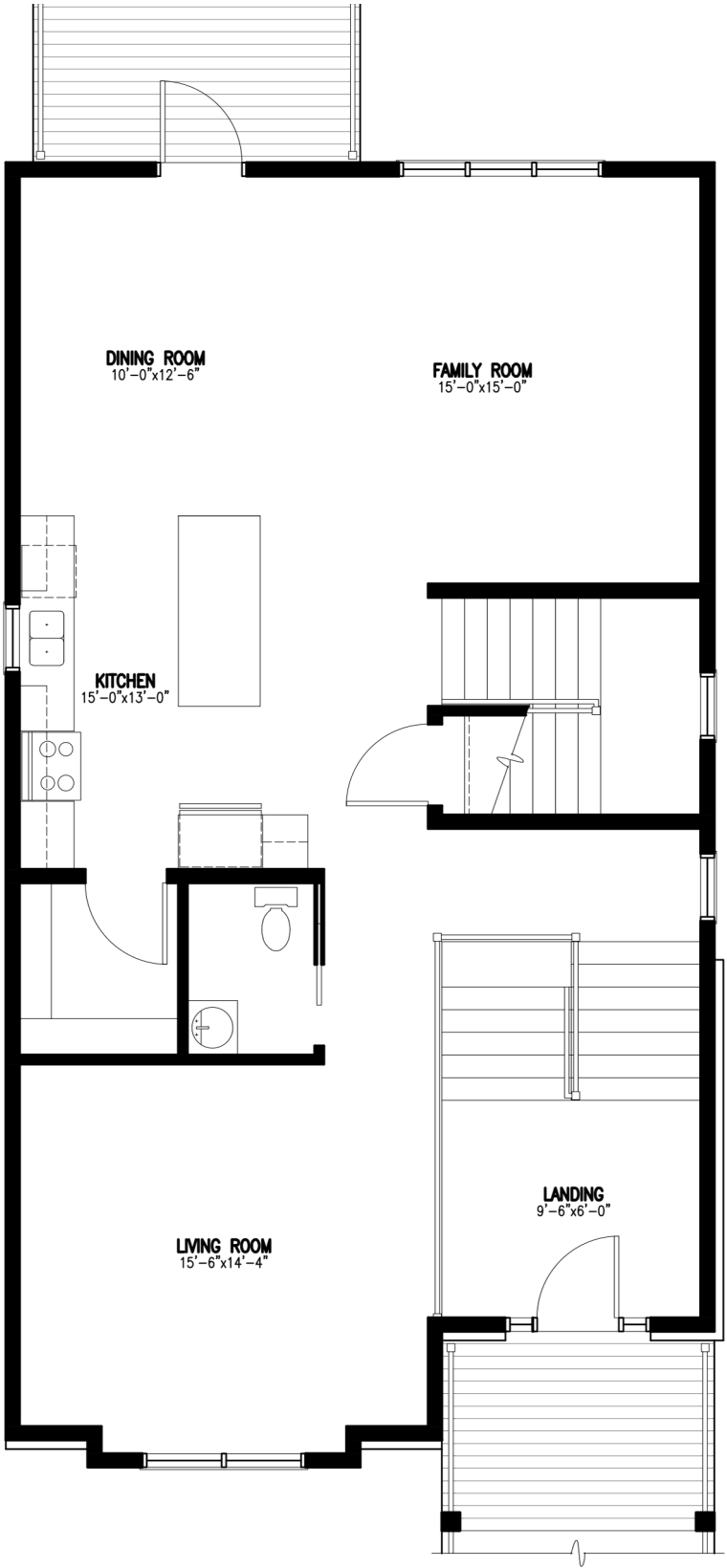
BEDS

3.5

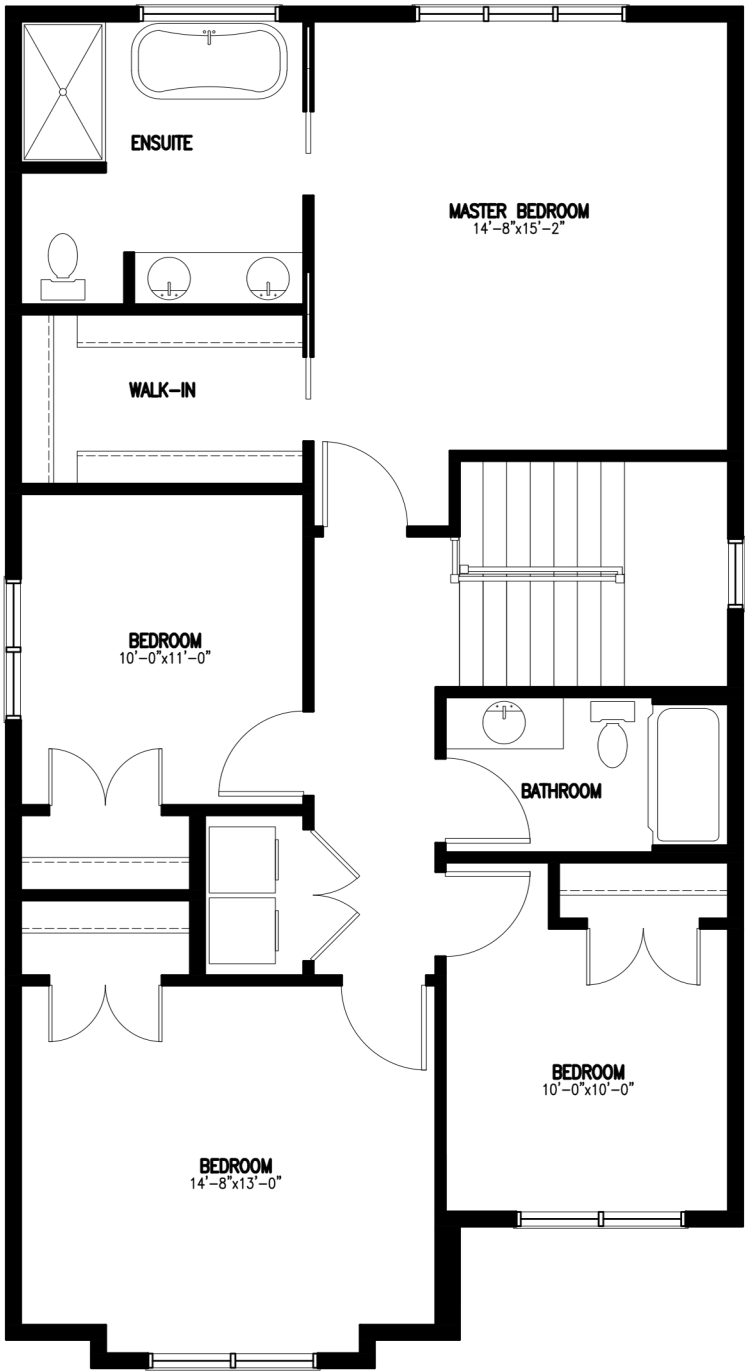
BATHS



BASEMENT FLOOR



FIRST FLOOR



SECOND FLOOR

DISCLAIMER: Materials, specifications and floor plans are subject to change without notice. All dimensions are approximate and may not be to scale. Actual usable floor space may vary from the stated floor area. Exterior elevations are artistic concepts only: window size and design, roof pitch and masonry detail may vary from plan. Layout for kitchen, furnace, HWT and laundry tub may vary from plan. Vertical and horizontal bulkheads, which are not shown on plan may be required for structural plumbing and ventilation runs. E. & O.E. Issued: March 2025.